



Information

for Parents/Carers when your Child is Identified with Special Educational Needs



wakefieldcouncil

We know it can be a worrying time, and you are likely to have a lot of questions wondering where to turn for further support and information.

At a 'Let's Talk About SEND' event arranged by Wakefield's Parent Carer Forum in March 2023 we asked a large group of parents:

- what information would have been helpful at the start of the journey
- what they know now that they wished they had known before
- what support/service was the most helpful

From this we have captured key themes and put them into this leaflet, which will be updated as appropriate to reflect further developments. Please remember you are not alone, there is a lot of support available.

This isn't a full list – as we don't want to overload you but hopefully a good starting point. Schools and settings also have a wealth of information and will offer support.

Local Support for Parents

Wakefield Parent Carer Forum (WPCF)

Their mission: working together to make a positive difference and improve the quality of life for all SEND children and families in Wakefield. It is an independent organisation who work with families of children and young people with SEND aged 0 to 25 who live in Wakefield. Led by local parents – please visit their website to find out more. They offer lots of support and activities for families. Details of how to contact the PCF and how to become a member can be found on their website.

Email: info@wakefieldparentcarers.co.uk

Facebook: facebook.com/wakefieldparentcarerforum

Website: wakefieldparentcarers.co.uk



WESAIL

This is Wakefield's SEND Information, Advice, Support Service (SENDIASS) provided by Family Action. It is fully impartial and offer a range of support to families. The service offers guidance and support to children and young people under the age of 25 and their parents and carers through a range of channels, including phone, email, website, social media, and face-to-face interaction at their office and community outreach centres. Their website provides lots of useful information.

You can contact Wakefield WESAIL SENDIASS
Monday to Friday, between 9:00am and 5:00pm



Phone: **01924 965588**

Email: **wesail@family-action.org.uk**

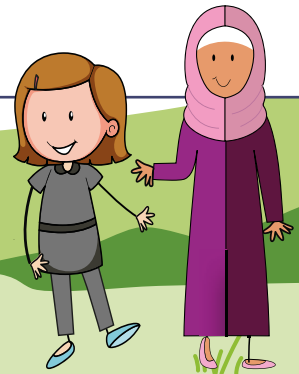
Website: **wakefield.mylocaloffer.org/wesail-including-sendiass**

Wider Support

Carers Allowance

You may be eligible for Carer's Allowance if you, the person you care for and the type of care you provide meets certain criteria. You must be in receipt of DLA or PIP to apply for this benefit. Please visit their website to find out more.

Website: **www.gov.uk/carers-allowance**



Carers Wakefield & District

An unpaid carer is someone who provides support to a family member or friend with an illness, disability, frailty, mental health condition or addiction. Wakefield Council and Wakefield District Health and Care Partnership provide funding for support. Our aim is to ensure that the carers across Wakefield district are heard and supported so that they are better able to care for their loved ones while still looking after themselves. The 'My Time' carers breaks and support scheme enables the carer to apply for a maximum of £100 per annum to get a break from caring. This is available to anyone who is looking after a child for an average of at least 35 hours a week.

Phone: Wakefield **01924 305544**

Website: carerswakefield.org.uk



CEA Card

The CEA Card entitles you to ONE free ticket for someone to accompany the person requiring assistance to visit the cinema. To apply please visit their website.

Website: ceacard.co.uk/online-application/about

Children's Occupational Therapy

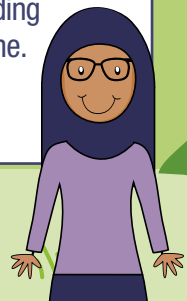
That makes sense website contains a series of videos to help you understand and support your child's sensory processing needs.

Website: midyorks.nhs.uk/that-makes-sense

Children's Therapy

The Children's Therapy website contains lots of useful information regarding the services on offer along with advice and guidance you can use at home.

Website: midyorks.nhs.uk/childrens-therapy



Contact

A national helpline and website to support families with SEND. As well as the Information & advice | Contact section on line, they run an advice helpline for parents and carers with disabled children. However, please check if you can find the answer to your question in the online information and advice pages first via the FAQ tool or ask their chatbot Charlie to help.

You can phone Contact Monday to Friday, 9.30am to 5:00pm (10.15am on Tuesdays).



Phone: **0808 808 3555**

Website: [contact.org.uk/help-for-families/information-advice-services](https://www.contact.org.uk/help-for-families/information-advice-services)

Contact also offer emotional support, through a 1 to 1 telephone support service. Please visit their website for more information.

Website: [contact.org.uk/help-for-families/listening-ear](https://www.contact.org.uk/help-for-families/listening-ear)

Disability Living Allowance (DLA)

DLA is the main benefit for disabled children to help meet any extra costs of being disabled. Any ill or disabled child may be able to qualify, even those who don't have a diagnosis. It can be claimed by children with learning difficulties, developmental delay, autism or mental health conditions, as well as by those with physical disabilities. It is not means tested so your financial situation will not be taken into account. DLA is also not taxable or treated as income for other benefits. Instead, DLA can sometimes lead to an increase in other benefits, or help families qualify for them if they don't already get them. In short, DLA can make a real difference to a family's overall income. DLA only applies to children who are aged under 16. Older disabled children need to claim Personal Independence Payment instead.

Website: [contact.org.uk/help-for-families/information-advice-services/benefits-financial-help/benefits-and-tax-credits/disability-living-allowance](https://www.contact.org.uk/help-for-families/information-advice-services/benefits-financial-help/benefits-and-tax-credits/disability-living-allowance)

It is recommended parent/carers notify HMRC if DLA has been awarded if you are also claiming universal credit or tax credits so the disabled element can be added onto your claim. Also please notify them if Carer's Allowance is awarded as this will help ensure you receive the correct amount of benefit.

Family Fund

Family Fund are the UK's largest grant-making charity for families raising a disabled or seriously ill child, on a low income. Family Fund believes that families raising disabled or seriously ill children and young people should have the same choices, quality of life, opportunities and aspirations as other families. They try to make this happen every day by: Giving grants to families on a low income, offering services to help parents and carers to achieve the outcomes they want for their child and family and providing ways for families to share their experiences. Details of how to apply are on their website.



Phone: **01904 550055**

Website: familyfund.org.uk

Family Hubs

At the Family hubs you can get help and support from the right specialist services at the right time. You can also meet other local families, take part in activities and join helpful groups. You can find your local Family hub by the link below. To discover more services, activities and groups available across the district, you can visit Community, Wakefield.

Email: wakefieldfamiliesogether@wakefield.gov.uk

Website: wakefieldfamiliesogether.co.uk/family-hubs

Website: communitywakefield.org

Sibs

Sibs is for brothers and sisters of disabled children and adults. They offer advice, information and support. All the information can be found on their website. Sibs exists to support people who grow up with or have grown up with a disabled brother or sister. It is the only UK charity representing the needs of over half a million young siblings and over one and a half million adult siblings.

Website: sibs.org.uk



Wakefield Awareness Support Project (WASP)

WASP is funded by Wakefield District Health and Care Partnership. The service is unique in its approach to supporting children and young people's emotional wellbeing, particularly where a young person experiences anxiety and low mood as a result of Autism or where not diagnosed but identified social, communication and interaction difficulties or other neuro-developmental disorders. WASP offers two distinct complementary elements which work in collaboration with each other to support both the parents/carers and the young person with a bespoke package of support.

Phone: **01924 683890**

Email: **enquiries.yorkshire@kids.org.uk**

Website: **kids.org.uk/wakefield-awareness-support-project**



Please note: WASP is a targeted service and referrals need to come from a professional involved with your family. The referral form is on **[Wakefield.mylocaloffer.org](https://wakefield.mylocaloffer.org)** search for WASP.

Wakefield Information Network

The IN is a register of families with children and young people with special educational needs and/or disabilities (SEND), aged 0 to 25 years, and practitioners who work with them. The IN is used to send out information about support and services, consultation exercises and a termly newsletter. When you join the Information Network you can also choose to have a max card. It is a national discount initiative for children and young people with SEND aged 0-25 years. Cards are funded as part of the Information Network by Wakefield Council. You can find more information on the Wakefield SEND Local Offer website. You can join the IN by completing an application form online or contacting WISENDSS Team for a form.

Phone: **01924 302471**

Email: **informationnetwork@wakefield.gov.uk**

Website: **wakefield.mylocaloffer.org/information-network/about**

Application form: **wakefield.mylocaloffer.org/s4s/FormDetails/FillForm?formId=785**



Wakefield SEND Local Offer

Wakefield's SEND Local Offer provides information, support and things to do for children and young people under 25 years old with SEND. It also helps parents, carers and professionals. Lots of different people contribute to the Local Offer. These can be from education, health care or social care. They can also be parents, carers, children or young people. A Local Offer Newsletter is produced 3 times a year.

Website: wakefield.mylocaloffer.org

West Yorkshire Night OWLS

West Yorkshire Night OWLS is a confidential support line for children, young people, parents and carers who live in Wakefield, Bradford, Leeds, Calderdale and Kirklees. You can contact Night Owls if a child or young person you care for is in a crisis and you are concerned about their emotional wellbeing. Please note funding has been extended to September 2023 for this service.

They are available 8pm to 8am every day,
Freephone: **0800 1488 244**
Text: **07984 393700**

